



Lakeside

Jerry Oates, Principal
 1805 S 13th St
 Wilmington, NC 28401 6469
 (910) 251-6161

Grades 6-12
 Alternative Education
 Traditional Calendar

New Hanover County Schools

SAFE, ORDERLY AND CARING SCHOOLS

School Safety

The number of acts of crime or violence reported below includes all acts occurring in school, at a bus stop, on a school bus, on school grounds, or during off-campus, school-sponsored activities.

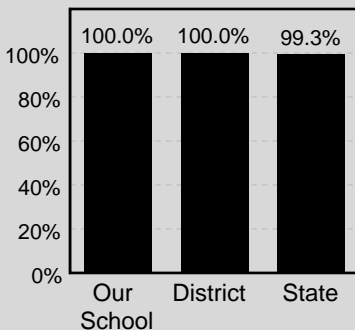
Out of 90 students in our school, there was a total of 1 act[s] of crime or violence.

The number of acts of crime or violence reported per 100 students:

OUR SCHOOL	1
DISTRICT	1
STATE	1

Access to Technology

Percentage of classrooms



SCHOOL PROFILE

School Size

The total number of students in this school and the average number of students in schools with similar grade ranges at the district and state levels.

OUR SCHOOL	90
DISTRICT	90
STATE	202

Average Class Size

The average number of students enrolled in the "typical" K-8 classroom.

	Grade 6	Grade 7	Grade 8
Our School	N/A	N/A	11
District	22	23	23
State	21	21	20

Average Course Size

The average number of students enrolled in the the courses listed at the time of testing.

	English I	Algebra I	Algebra II	Geometry	Biology	Chemistry	Physical Science	Physics	Civics & Econ.	US History
Our School	6	5	N/A	N/A	N/A	N/A	N/A	N/A	N/A	N/A
District	20	20	20	21	19	19	19	16	22	19
State	18	19	19	19	17	17	17	14	18	17

HIGH STUDENT PERFORMANCE

Performance of Students in Each Grade on the ABCs End-of-Grade Tests

Percentage of Students' Scores At or Above Grade Level

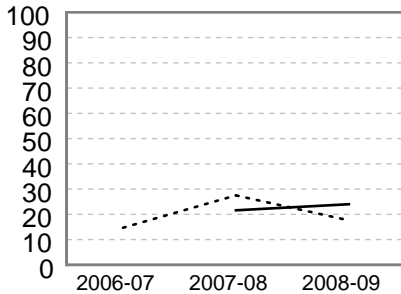
	Grade 6		Grade 7		Grade 8		OVERALL	
	Reading	Math	Reading	Math	Reading	Math	Reading	Math
Our School	25.0%	16.7%	21.4%	7.1%	25.0%	24.0%	24.0%	17.6%
District	75.6%	80.5%	70.1%	82.2%	73.2%	83.8%	71.9%	82.0%
State	71.0%	78.1%	65.0%	78.4%	66.6%	80.4%	67.6%	80.0%

N/A = Fewer than five students

HIGH STUDENT PERFORMANCE, CONTINUED

Three-Year Trend of Student Performance on the ABCs End-of-Grade Reading and Math Tests

Percentage of students at or above grade level for the past three years.



---- Math — Reading
 * A multi-year trend for reading is only available beginning in 2007-08 because of new tests based on the revised Standard Course of Study.

School Attendance

The average percentage of students who attend school daily.

Our School	90%
District	94%
State	95%

To learn more about federal No Child Left Behind (NCLB) requirements, visit <http://www.ncpublicschools.org/nclb/>

For information about the ABCs of Public Education and Adequately Yearly Progress (AYP), visit <http://www.ncpublicschools.org/accountability/>

Performance of Students in Each Course on the ABCs End-of-Course Tests

Percentage of Students' Scores At or Above Grade Level

	English I	Algebra I	Algebra II	Geometry	Biology	Chemistry	Physical Science	Physics	Civics & Econ.	US History
Our School	28.6%	12.5%	N/A	N/A	N/A	N/A	N/A	N/A	N/A	N/A
District	77.1%	71.0%	73.8%	70.7%	70.2%	82.3%	56.5%	93.1%	75.5%	75.5%
State	73.8%	67.7%	72.9%	73.3%	71.2%	77.7%	62.7%	85.9%	71.4%	71.2%

N/A = Fewer than five students

Performance of Each Student Group on the ABCs End-of-Grade Tests

Percentage of Students, Grouped by Gender, Ethnicity, and Other Factors, Who Passed BOTH the Reading and Math Tests

	Male	Female	White	Black	Hispanic	Amer. Indian	Asian Pacific Islander	Multi-Racial	E.D.	N.E.D.	L.E.P.	Migrant Students	Students with Disabilities
Our School	7.9%	33.3%	36.4%	8.1%	N/A	N/A	N/A	N/A	6.9%	23.8%	N/A	N/A	<5%
# of tests taken	38	12	11	37	N/A	N/A	N/A	N/A	29	21	N/A	N/A	11
District	66.4%	70.8%	81.1%	38.6%	52.5%	55.3%	83.5%	67.2%	48.9%	83.0%	38.3%	N/A	27.5%
State	61.5%	66.4%	76.7%	43.6%	48.9%	49.2%	76.5%	65.5%	48.3%	78.4%	34.6%	35.8%	32.3%

E.D. = Economically Disadvantaged N.E.D. = Not Economically Disadvantaged L.E.P. = Limited English Proficiency
 N/A = Fewer than five students

Performance of Each Student Group on the ABCs End-of-Course Tests

Percentage of Passing Scores on the End-of-Course Tests Grouped by Gender, Ethnicity, and Other Factors

	Male	Female	White	Black	Hispanic	Amer. Indian	Asian Pacific Islander	Multi-Racial	E.D.	N.E.D.	L.E.P.	Migrant Students	Students with Disabilities
Our School	25.9%	25.0%	40.0%	15.8%	N/A	N/A	N/A	N/A	36.4%	20.8%	N/A	N/A	25.0%
# of tests taken	27	8	15	19	N/A	N/A	N/A	N/A	11	24	N/A	N/A	12
District	74.1%	73.2%	82.5%	48.5%	65.5%	73.9%	90.3%	77.8%	54.8%	82.2%	59.3%	N/A	42.5%
State	71.6%	71.3%	81.0%	53.2%	63.6%	62.6%	83.3%	74.0%	58.0%	79.1%	52.1%	48.7%	43.9%

E.D. = Economically Disadvantaged N.E.D. = Not Economically Disadvantaged L.E.P. = Limited English Proficiency
 N/A = Fewer than five students

HIGH STUDENT PERFORMANCE, CONTINUED

School Performance

Each year, schools in North Carolina may receive several designations based on their performance on the state's ABCs tests. These designations are awarded on the basis of the percentage of students performing at grade level and on whether students have learned as much as they are expected to learn in one year.

Our School's Designation(s): No Recognition

DESIGNATION	PERFORMANCE: STUDENTS PERFORMING AT GRADE LEVEL	GROWTH: LEARNING ACHIEVED IN ONE YEAR			PERCENT OF SCHOOLS WITH DESIGNATION	
		High Growth	Expected Growth	Expected Growth Not Achieved	DISTRICT	STATE
HONOR SCHOOL OF EXCELLENCE	At least 90% of students at grade level and school made adequate yearly progress (AYP)				0%	5%
SCHOOL OF EXCELLENCE	At least 90% of students at grade level				0%	0%
SCHOOL OF DISTINCTION	At least 80% of students at grade level				0%	9%
SCHOOL OF PROGRESS	At least 60% of students at grade level				0%	46%
NO RECOGNITION	60 to 100% of students at grade level			✓	100%	27%
PRIORITY SCHOOL	50 to 60% of students at grade level, OR Less than 50% of students at grade level				0%	9%
LOW PERFORMING	Less than 50% of students at grade level				0%	5%

In any group where the percentage of students at a grade level is greater than 95% or less than 5%, the actual values are not displayed because of federal privacy regulations. In these cases the results are shown as >95% or <5% for the group.

Adequate Yearly Progress (AYP) Results

North Carolina has set target goals that schools must meet to make Adequate Yearly Progress (AYP) under the federal No Child Left Behind (NCLB).

Our school did not make adequate yearly progress.
Our school met 3 out of 4 AYP targets.

QUALITY TEACHERS

	Total Number of Classroom Teachers*	Fully Licensed Teachers	Classes Taught by Highly Qualified Teachers	Teachers with Advanced Degrees	National Board Certified Teachers*	Years of Teaching Experience			Teacher Turnover Rate
						0-3 years	4-10 years	10+ years	
Our School	12	92%	100%	25%	N/A	17%	42%	42%	10%
District	12	92%	100%	25%	N/A	17%	42%	42%	10%
State	21	87%	93%	29%	4	17%	31%	52%	14%

* The total number of teachers in this school and the average number of teachers in schools with similar grade ranges at the district and state level.



Public Schools of North Carolina
State Board of Education | Department of Public Instruction

Keeping you informed

More information about your school is available on the NC School Report Cards website at:
<http://www.ncreportcards.org>